

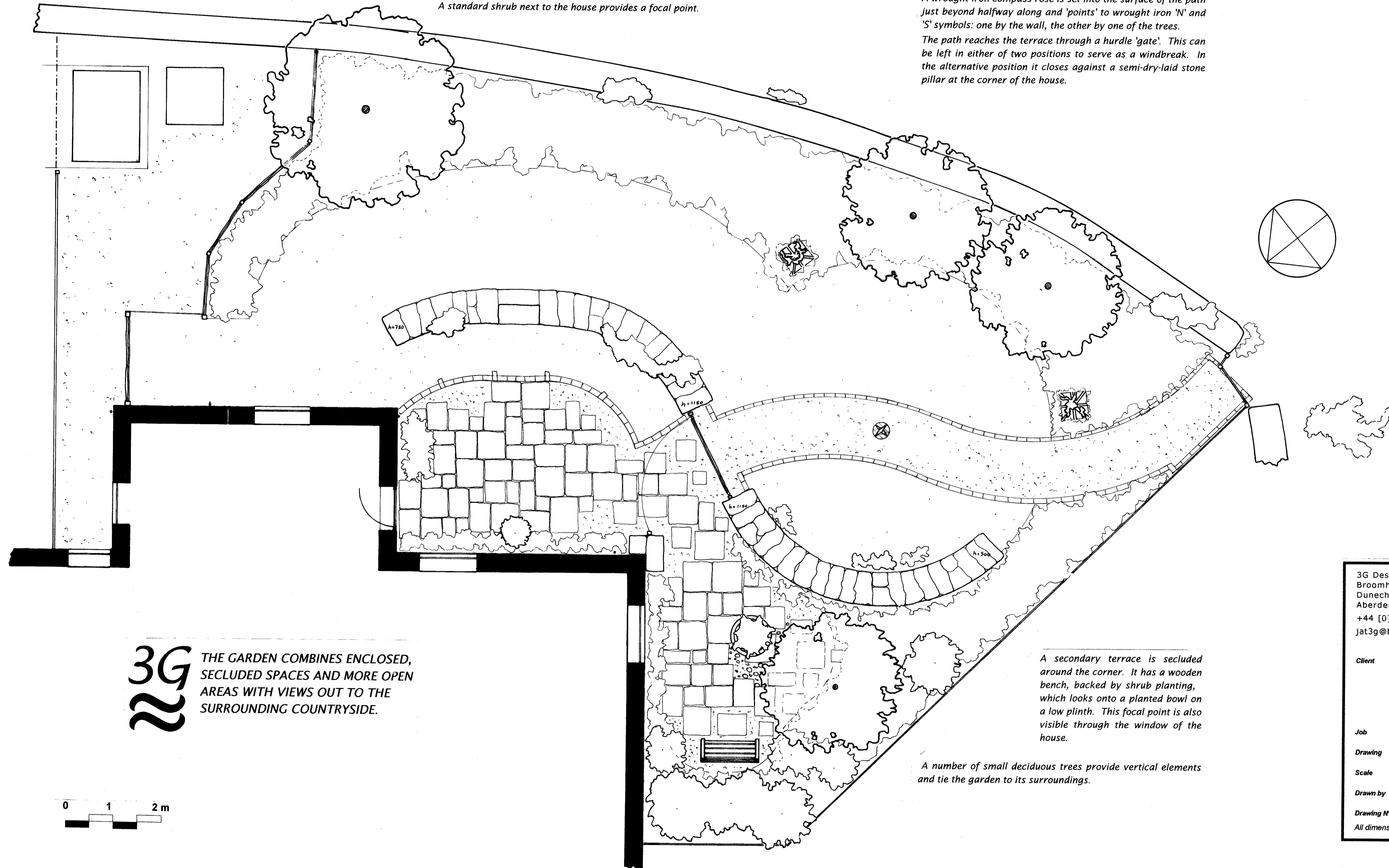
A utility area contains the oil tank and a compost bin as well as providing an area for log storage and space for a kayak. It is separated from the main garden by fence composed of woven hazel panels.

The terrace beside the house is of random-laid stone paving (reclaimed Caithness stone) with some infill of 'Barra Shell'. The dry-stone wall has a built-in seat in the middle and is separated from the paved area by a slightly raised grass 'pavement'. A row of 'cassies' forms the pavement edge. The grass continues around the wall linking with the circular lawn. A standard shrub next to the house provides a focal point.

A curved path of 'Barra Shell' edged with granite 'cassies' leads from the entrance gate to the terrace (and to the door of the house). The path crosses a circular lawn bounded on one side by a rising dry-stone wall. On the opposite side are two pyramids of woven willow, supporting climbing plants.

A wrought-iron compass rose is set into the surface of the path just beyond halfway along and 'points' to wrought iron 'N' and 'S' symbols: one by the wall, the other by one of the trees.

The path reaches the terrace through a hurdle 'gate'. This can be left in either of two positions to serve as a windbreak. In the alternative position it closes against a semi-dry-laid stone pillar at the corner of the house.



3G THE GARDEN COMBINES ENCLOSED, SECLUDED SPACES AND MORE OPEN AREAS WITH VIEWS OUT TO THE SURROUNDING COUNTRYSIDE.

A secondary terrace is secluded around the corner. It has a wooden bench, backed by shrub planting, which looks onto a planted bowl on a low plinth. This focal point is also visible through the window of the house.

A number of small deciduous trees provide vertical elements and tie the garden to its surroundings.

3G Design
Broomhill Studio
Dunecht
Aberdeenshire AB32 7ED
+44 [0]1330 833426
jat3g@btinternet.com

3G

Client **S Farrar and I Wilson**
2 Barnyards of
Drumnaheath
Leylodge
Aberdeenshire
AB51 0YE

Job **Redesign Garden**

Drawing **Outline Proposal**

Scale **1:50** Date: **June 2003**

Drawn by **JMW**

Drawing N° **03040102**
All dimensions should be checked on site