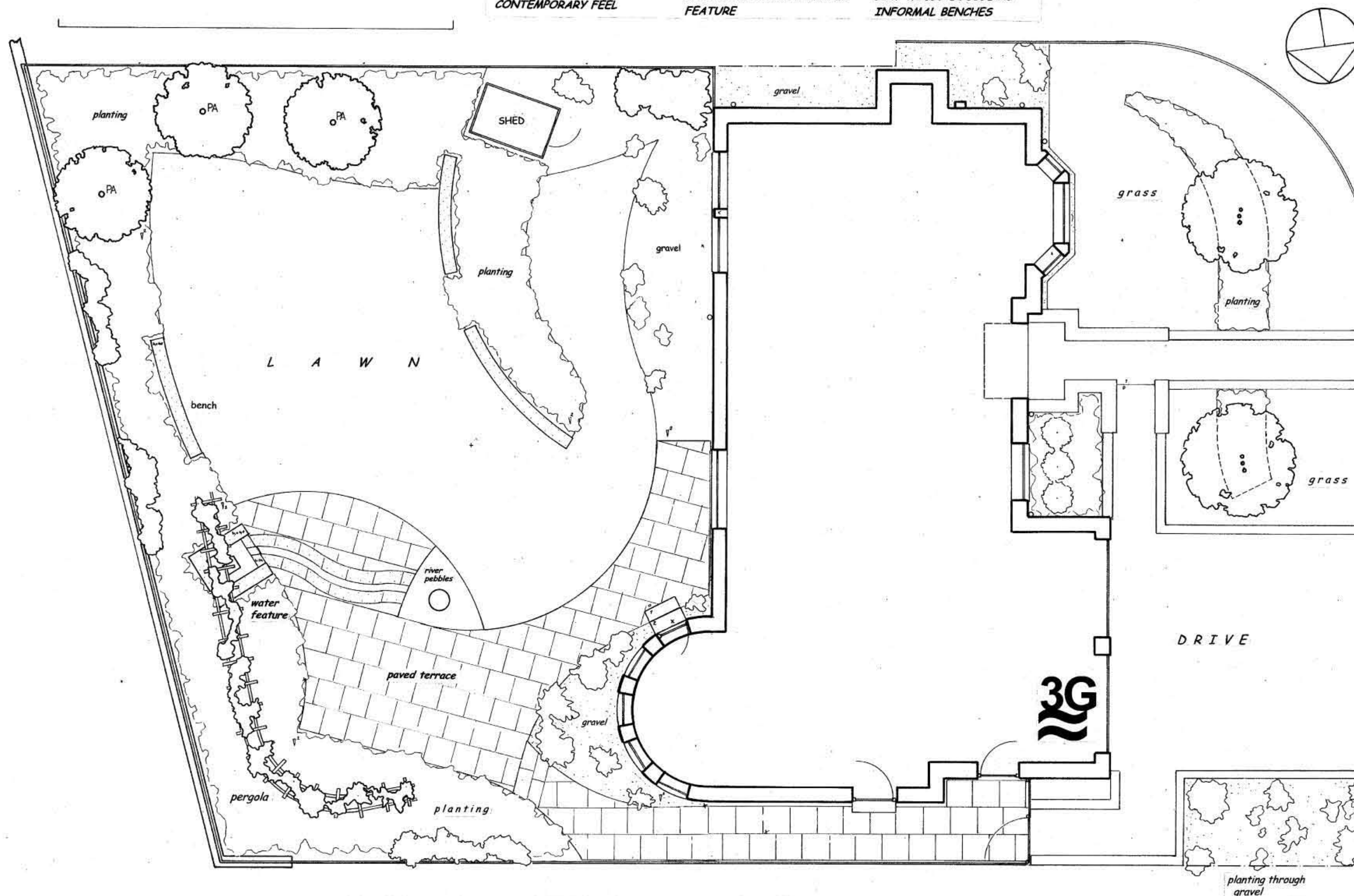


ASYMMETRICAL CURVES
JUXTAPOSED WITH THE
STRAIGHT LINES OF THE
HOUSE AND THE COURSING
OF THE PAVING GIVE THE
GARDEN A STRONG
CONTEMPORARY FEEL

A CENTRAL LAWN PROVIDES
THE GARDEN'S 'OPEN HEART'
A PAVED TERRACE PROVIDES
THE MAIN SITTING AREA
IT IS BACKED BY A PERGOLA
AND LOOKS ONTO A WATER
FEATURE

THE SURROUNDING
PLANTING GIVES SOME
ENCLOSURE WITH SMALL
COLUMNAR TREES GIVING A
VERTICAL ACCENT
LOW WALLS DOUBLE AS
INFORMAL BENCHES



Landscaping Notes

Boundaries

All boundary fences to be retained (but see gate, below). Fix additional boards to create hit n' miss fence. Colour: 'Driftwood' from Cuprirol (deck colour range). Add wires for climbing plants where indicated.

Levels

Any changes to levels will be superficial only, to accommodate new landscaping.

Surfaces

Terrace 'Rio' paving from Stonemarket. Predominantly 600 x 600 mm 'Shell'. Rill edges use wave pattern, in 'Storm'. Sub-base 75-100 mm DTP1 or equivalent.

Paths Main garden paths are continuous with terrace, construction as per terrace, coursing as per drawing.

Gravel Gravel areas: silver-grey granite chips to max. 14 mm (laid over weed-suppressing geo-textile membrane *only where planting not indicated*; ie. immediately around/in front of shed and at south end of house).

Pergola

Tanalised softwood/laminate. Posts are square timber (9 x 9 cm) (16 N° posts required). Construct from Hilti/our components (Excellent Reflex system): concentric radial crossbeams (radii 203/248 mm) with matching straight sections (all sections 4.5 x 9 cm) and arch (Excellent arch crossbeams); rafters 72 cm x 4.5 x 9 cm. (NB Cut arch crossbeams from over-long component eg '240 Reflex' - '187' has lower profile and will not match straight sections).

Shed

Free-standing 6' x 4' timber shed: 'Heavy Duty Apex' in Cedar from Taylors.

(NB. No colour - allow to weather naturally)

Wall/Bench Sections

Low walls double as benches. Built as per water feature surround. (Coping: 'Rio Storm')

Gate

Entrance gate to be replaced: 'Allendale' from Dandl. Colour to match garage doors (eg 'Mahogany' from Butinox 1 range). Adjoining fence to close boarded with 100 mm planed boards painted as gate.

Water feature

'Hexagon, polished' from Iota on raised plinth (100 mm waterproof concrete - reinforced - on compacted hardcore. NB. Allow for introduction of water supply to unit). Surround of River Pebbles within wall: blockwork rendered to match house, (include waterproofing agent) coping of 'Rio' paving in 'Storm'. Front wall section is lower; outflow (lower again by thickness of coping) formed from copper, positioned at angle to align with rill. Rill is formed of concrete cast in-situ (min. 100 mm thickness); sides should taper outwards from base. (Alternately form sides from blockwork on concrete base, obtaining taper with render.) Depth of rill ~ 220 mm (Width nominal 200 mm). Reservoir with pump/fitter under River Pebbles and decorative granite sphere (or oil lamp from Kirk Natural Stone Japanese range). (Wall heights on drawing measured from paving surface.)

Lighting

A low-voltage lighting system will be installed (separate spec.) Ducting should be installed to carry power from a transformer in the house (position to be agreed with clients) to all points marked 'L' on drawing (numbers denote separate circuits).

Front Garden

Add new planting beds with multi-stemmed Eucalyptus as centrepiece. Create gravel-filled gap between house and grass; edge grass with 'Smartedge' (including planting beds).

Planting Notes

Trees

PA Prunus Amanogawa (x3)

Lawn

Existing grass to be retained where lawn required. Scarify/weed/feed as necessary. Add edge of 'Smartedge'.

General planting

A mix of shrubs and perennials, including ferns and bulbs. Planting areas should be mulched with bark chip.

Full planting plans/lists to be prepared by 3G

3G Design
Broomhill Studio
Duneech
Aberdeenshire AB32 7ED
+44 [0]1330 833426
jat3g@tiscali.co.uk

Job: Garden re-design

Drawing: Outline Proposal (2)

Scale: 1:50 Date: April 2006

Drawn by: JMW

Drawing n° 05080503

All dimensions should be checked on site

Materials Suppliers

Paving/Aggregates:
GPH, Westhill
01224 748313

Geotextile membranes:
G-Tex
01604 722099

Timber materials:
Grays, Bridge of Don
01224 707470

Gates:
Dandl, Dobbies, Aberdeen
'Smartedge' lawn edging:
Scotgold, Banchory
01330 820500

Pergola:
Hillhout (distributor)
Deeside Log Cabins
013398 84464

Water feature:
Iota 01934 522617

Shed:
taylorsgardenbuildings.co.uk

Stone Oil Lamp:
Kirk Natural Stone
01651 891891

Trees:
Bellwood Trees
01828 640219
or Christie's Elite
0800 626070